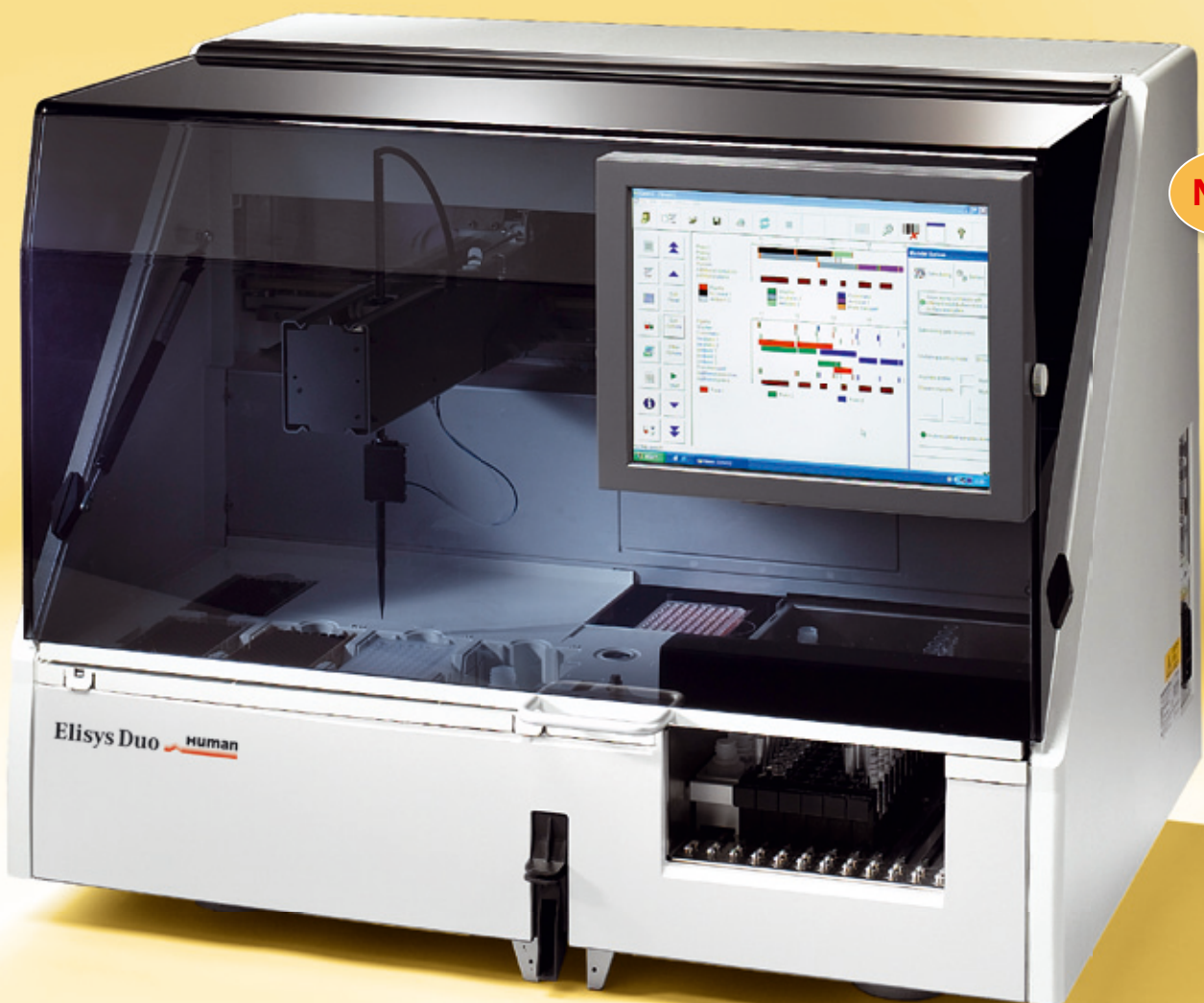


Elisys Duo

Fully Automated ELISA Analyzer

- > Optimised for medium throughput segment
- > Up to 3 plates simultaneously
- > 180 HUMAN/IMTEC ELISA tests available*
- > Engineered and manufactured in Germany and Switzerland

ELISA



* IMTEC tests in Q1 | 2010

Elisys Duo

Compact Advanced Fully Automated ELISA Analyzer

New generation of ELISA analyzer

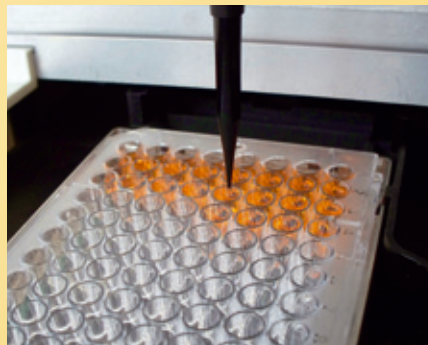
- > Advanced technology
- > Optimized for routine

Convincing performance

- > Built-in-PC and touchscreen
- > Open system
- > Up to 3 plates can be loaded
- > Up to 8 different tests on one plate
- > Continuous loading of samples, reagents and plates
- > Sample and reagent barcode reader in-build
- > True walk away system

Easy and safe operation

- > Operation software windows
- > Barcode identification for samples and reagents
- > All HUMAN and IMTEC methods are preprogrammed
- > HUMAN tests specific racks
- > Direct use of HUMAN/IMTEC kit components
- > Disposable carbon tips
- > No carry over



High-capacity software

- > 144 samples & reagents
- > Primary samples
- > Barcode reading
- > Use of original kit bottles

High precision and safety

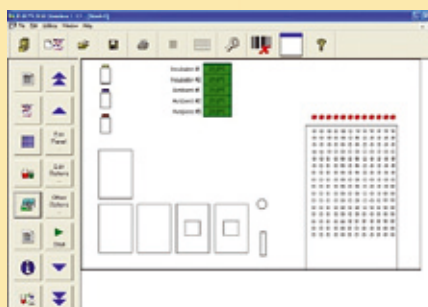
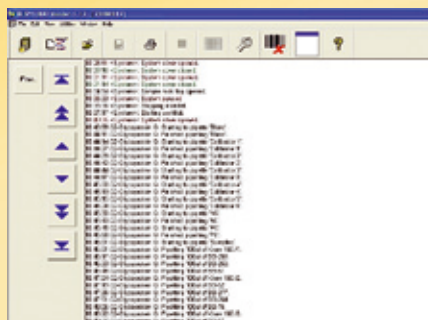
- > Disposable tips

High processing security

- > Event log documentation
- > Password protection on several levels
- > QC control program
- > In-process-control features

Flexible easy to use software

- > Graphical interface
- > Time management
- > ASTM interface (bidirectional)



Event log documentation

- > Run-specific information about hardware, software and assay processing
- > Optional printout together with the results

Self-explanatory structure

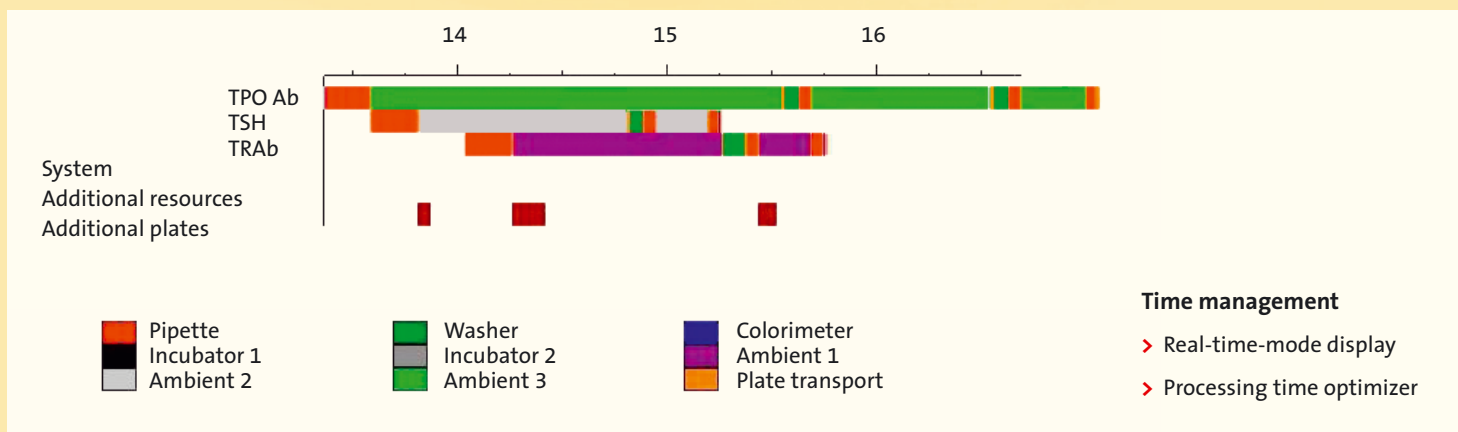
- > Permanently graphical update about the assay status and reagent allocation
- > Simple access and controlling via icons



NEW

Elisis Duo

- Dilution in deep-well plates (192 position)
- 2 incubators (temperatures up to 50 °C)
- 2 wash buffers



Elisis Duo

300 µl disposable tips

1100 µl disposable tips

Cat. No. 17200

Cat. No. 16300/10

Cat. No. 16300/11

Elisys Duo

Technical Data

2 plate fully automated ELISA analyzer

Number of plates	up to 3 plates
Number of samples	max. of 144
Number of reagents	depending on rack configuration
Controls & standards	depending on rack configuration
Dilution area	for up to 192 dilution positions (2 x 96 Deep well plate)
Number of tips	up to 3 tip racks for 300 µl or 1100 µl disposable tips
Loading	continuous loading of plates, samples and reagents

Photometer

Spectral range	400 – 700 nm
Dynamic range	–0.100 to 3.000 OD (measurement range 1 wavelength) –3.000 to +3.000 OD (measurement range 2 wavelengths)
Accuracy	+/- 0.005 OD or 2.5 % (whichever is greater)
Linearity	0 – 2.000 OD +/- 1 %
Detection	photodiode
Read modes	OD
Filters	up to 8 positions

Pipetting system

Pipettor	Liquid pipettor for disposable tips
Liquid level detection	standard (capacitive)
Min/Max volumes	10 µl to 300 µl (with 300 µl tip) or 301 to 1000 µl (with 1100 µl tip)
Processing time	patient samples (100 µl/well) appr. 16 min. for 96 positions reagent (100 µl/well) appr. 4 min. for 96 positions
Accuracy	< 10 % at 20 µl, < 5 % at 100 µl
Precision	6 % at 20 µl, 3 % at 100 µl
Features	tip detection, mixing, multi-dispensing

Incubation

Capacity	2 independently controlled chambers, 1 ambient
Temperature range	ambient +5 to 45 °C
Accuracy	–2 °C; +0 °C (measured in plate, 200 µl)
Uniformity	+/- 1.5 °C (measured in plate, 200 µl aqua)

Washing

Capacity	up to 3 buffers. 2 x 2 l bottles, 1 x 1 l bottle
Wash head	1 x 8
Dispense volume	200 – 999 µl /well
Precision	10 % CV at 300 µl
Residual volume	< 3 µl in U Bottom < 6 µl in F Bottom
Fluid alarms	low reagent, waste full
Features	sweeps, soak, purge, top & bottom, wash, variable pump speeds, Plate & Strip mode

Others

Barcode	Samples and in rack system
Plate barcode reader	(optional)
Operating system	Windows XP
Interfaces	ASTM interface

ASCII import of worklist sample ID's

Time Scheduling	schedules 3 plates
Multiple assays per plate	up to 8 assays per plate
Export options	ASCII export/report
Qualitative	user definable result classes
Quantitative	linear to quadratic regression, sigma, and many more
QA analysis	Mean, SD, CV, Standard Error and Levey-Jennings (basic version)

Power supply

Universal AC input	wide range AC 50/60 Hz, ~100–240 V +/- 10 % typically Max 240 VA
--------------------	--

Dimensions

Packaging	97 (W) x 82 (D) x 75 (H) cm
Installed	120 (W) x 66 (D) x 110 (H) cm (with bottle tray and open cover)
Weight	90 kg

Environmental conditions

Temperature	operating: 15 – 30 °C transport: 5 – 50 °C
Humidity	operating: 30 – 80 % non condensing transport: 10 – 85 % non-condensing